



# YASHVI

JEWELLERY



## CONTACT US

### EMAIL

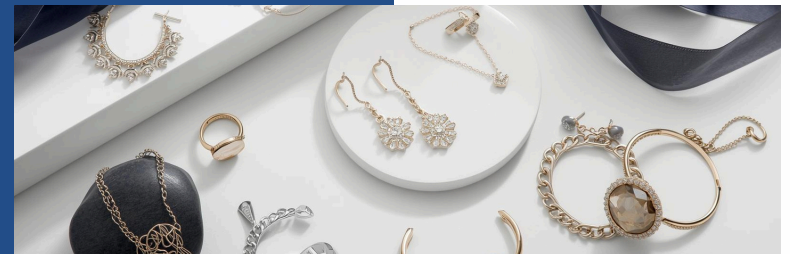
[INFO@YASHVIJEWELLERY.IN](mailto:INFO@YASHVIJEWELLERY.IN)

### WEBSITE

[WWW.YASHVIJEWELLERY.IN](http://WWW.YASHVIJEWELLERY.IN)

### ADDRESS

MUMBAI, INDIA



## OUR PROMISE

BEHAVIORAL-DRIVEN ASSORTMENTS THAT HELP YOUR SHOWROOM CONNECT THE RIGHT PIECE TO THE RIGHT MOMENT, DRIVING SALES AND CUSTOMER LOYALTY.

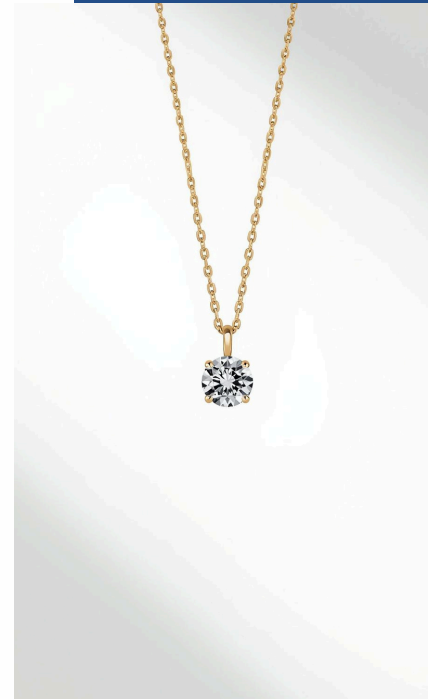
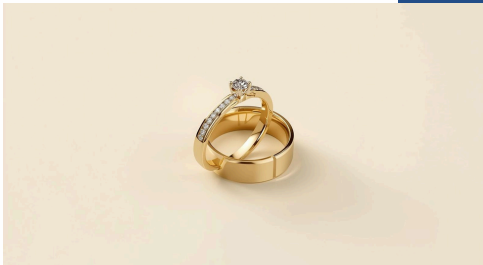
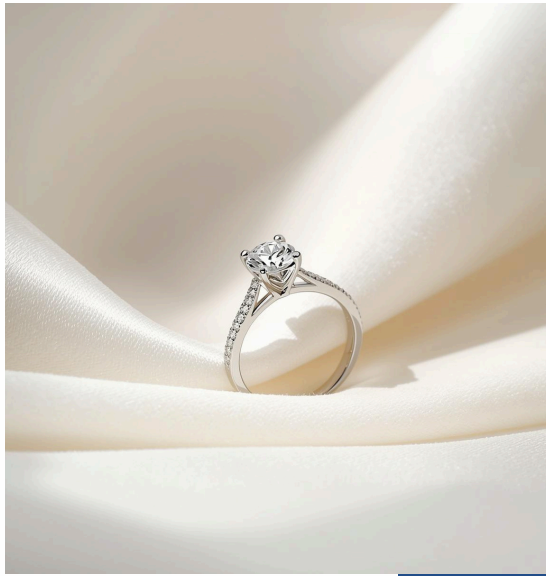


[WWW.YASHVIJEWELLERY.IN](http://WWW.YASHVIJEWELLERY.IN)

# MILESTONE MOMENTS

## CELEBRATE

JEWELRY THAT MARKS LIFE'S MOST MEANINGFUL MILESTONES AND GIFTS LASTING MEMORIES.



FROM GRADUATIONS TO PROMOTIONS, THESE PIECES BECOME TREASURED SYMBOLS OF ACHIEVEMENT. YOUR CUSTOMERS SEEK JEWELRY THAT HONORS HARD WORK AND NEW BEGINNINGS.

BIRTHDAY JEWELRY TRANSFORMS ORDINARY DAYS INTO CHERISHED MEMORIES. EACH PIECE BECOMES A REMINDER OF LOVE AND CELEBRATION.

ENGAGEMENT RINGS AND WEDDING BANDS THAT SYMBOLIZE ETERNAL COMMITMENT. ANNIVERSARY PIECES THAT RENEW PROMISES OF LOVE YEAR AFTER YEAR.

## TIMELESS GIFTS

STOCK PIECES THAT CUSTOMERS CHOOSE FOR LIFE'S BIGGEST MOMENTS.



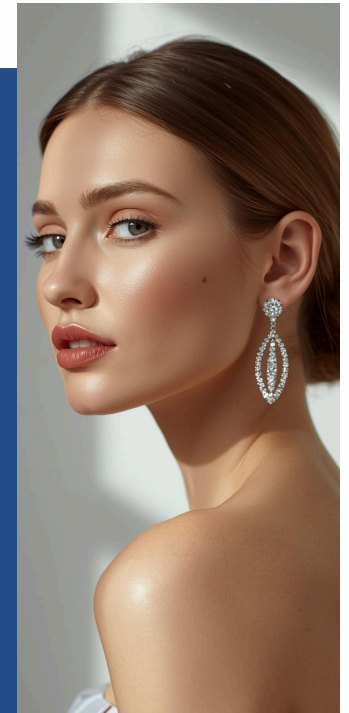
## GIFT WITH MEANING

JEWELRY THAT SPEAKS FROM THE HEART—PIECES CHOSEN TO EXPRESS LOVE, GRATITUDE, AND CONNECTION.



PARENT APPRECIATION: HONOR THE ONES WHO GAVE EVERYTHING. ELEGANT PENDANTS AND CLASSIC PIECES THAT SAY THANK YOU IN THE MOST MEANINGFUL WAY.

## FOR THOSE YOU LOVE



PARTNER GIFTS: FROM ANNIVERSARY SURPRISES TO SPONTANEOUS GESTURES, OUR CURATED SELECTION HELPS YOUR CUSTOMERS EXPRESS THEIR DEEPEST AFFECTION.



CHILD MILESTONES: FIRST BIRTHDAYS, GRADUATIONS, COMING-OF-AGE—TIMELESS PIECES THAT MARK PRECIOUS MOMENTS IN A CHILD'S JOURNEY.



## HEARTFELT GIFTING

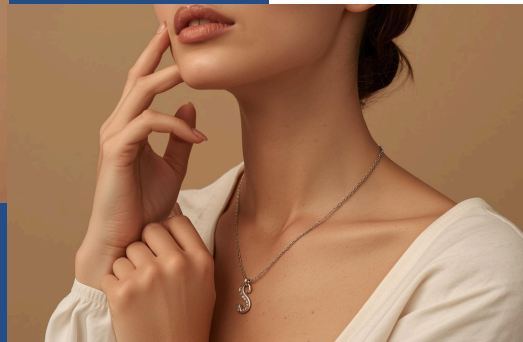
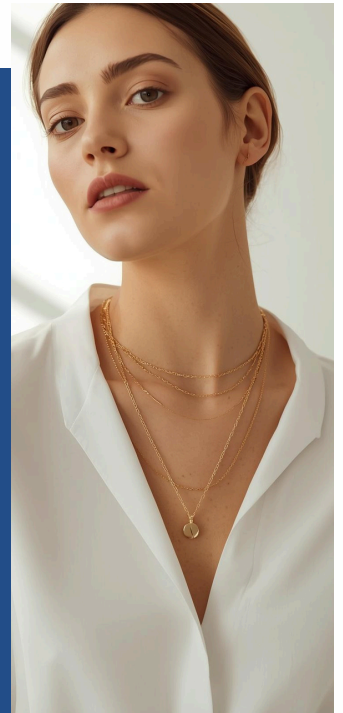
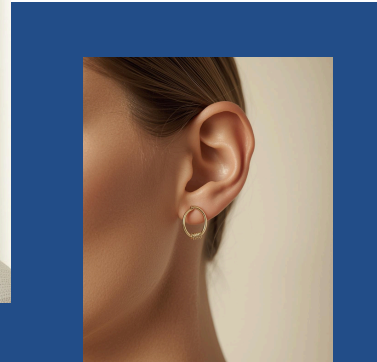
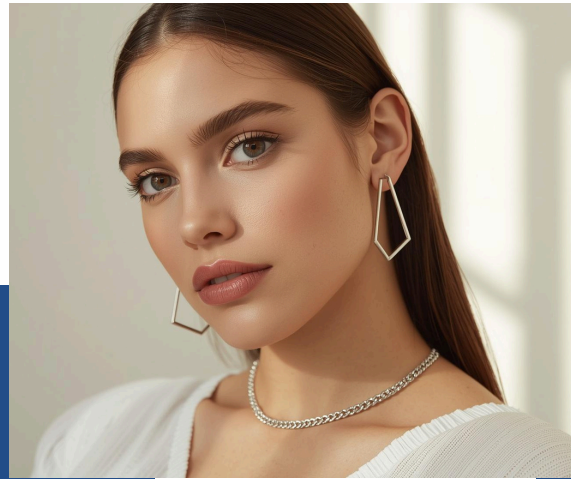
LOVED ONE TOKENS: SIMPLE, MEANINGFUL PIECES FOR FRIENDS AND FAMILY.



# PERSONAL STYLE COLLECTIONS

## EXPRESS YOURSELF

JEWELRY THAT SPEAKS YOUR LANGUAGE—PIECES FOR CUSTOMERS WHO WEAR THEIR IDENTITY.



FASHION-FORWARD DESIGNS: BOLD STATEMENT EARRINGS, LAYERED NECKLACES, AND STACKABLE RINGS THAT LET CUSTOMERS CURATE THEIR UNIQUE LOOK. HIGH TURNOVER PIECES THAT DRIVE REPEAT VISITS.

EVERYDAY SIGNATURES: MINIMALIST PENDANTS, PERSONALIZED INITIALS, AND SUBTLE CHARM BRACELETS. THE PIECES CUSTOMERS NEVER TAKE OFF—AND RECOMMEND TO FRIENDS.

MOOD JEWELRY CONNECTS EMOTIONALLY—CUSTOMERS RETURN TO REFRESH THEIR COLLECTION AS THEIR STYLE EVOLVES. STOCK VERSATILE PIECES THAT MIX AND MATCH.

## SIGNATURE PIECES

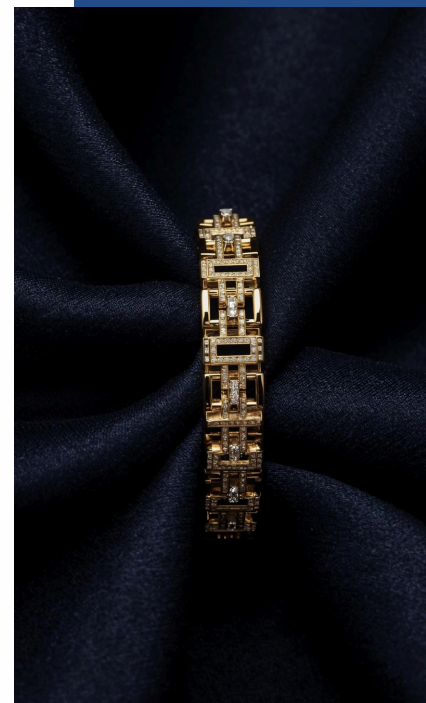
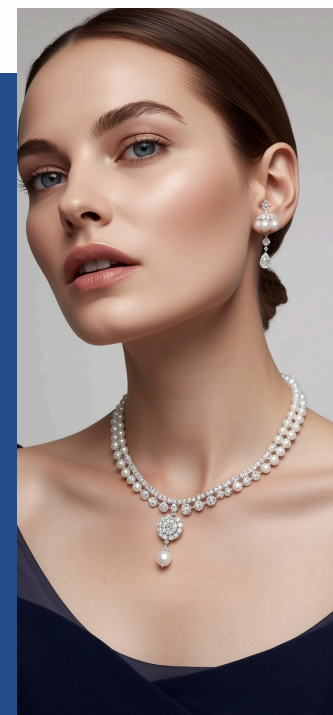
IDENTITY PIECES BUILD LOYAL CUSTOMERS WHO SEE JEWELRY AS SELF-EXPRESSION.



# LUXURY EXCLUSIVES

## PREMIUM STATEMENTS

FOR CUSTOMERS WHO SEEK DISTINCTION—  
JEWELRY THAT SIGNALS SUCCESS AND  
REFINED TASTE.



EXCEPTIONAL CRAFTSMANSHIP MEETS RARE  
MATERIALS. OUR PREMIUM COLLECTIONS FEATURE  
INVESTMENT-GRADE PIECES FOR CUSTOMERS  
SEEKING TIMELESS LUXURY.

LIMITED EDITION COLLECTIONS AND BESPOKE  
DESIGNS FOR DISCERNING CLIENTELE. STATUS  
PIECES THAT COMMAND ATTENTION AND CONVEY  
PRESTIGE AT EVERY OCCASION.

HIGH-MARGIN PRESTIGE PIECES  
THAT ATTRACT AFFLUENT BUYERS  
SEEKING SOCIAL DISTINCTION AND  
EXCLUSIVE OWNERSHIP.

## MASTER CRAFTED

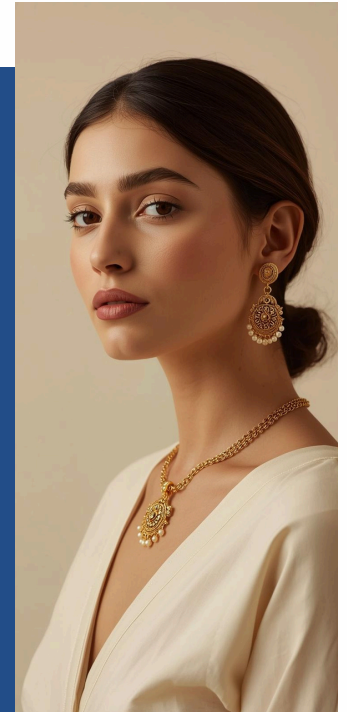
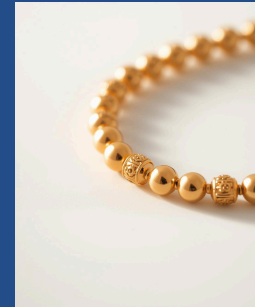
EACH PIECE CRAFTED FOR  
THOSE WHO APPRECIATE THE  
FINEST.



# TRADITION & LEGACY

## HERITAGE PIECES

TIMELESS DESIGNS THAT HONOR TRADITION, CUSTOM, AND FAMILY LEGACY.



RELIGIOUS & CEREMONIAL: SACRED PENDANTS, PRAYER BEADS, AND CEREMONIAL JEWELRY THAT CONNECT WEARERS TO THEIR FAITH AND SPIRITUAL TRADITIONS.

CULTURALLY SYMBOLIC: TRADITIONAL MOTIFS, REGIONAL DESIGNS, AND HERITAGE PATTERNS THAT CELEBRATE IDENTITY AND HONOR ANCESTRAL CUSTOMS.

HEIRLOOM COLLECTIONS: CRAFTED TO BE PASSED DOWN THROUGH GENERATIONS—PIECES THAT BECOME FAMILY TREASURES AND CARRY STORIES OF LOVE AND LEGACY.

## CULTURAL SYMBOLISM

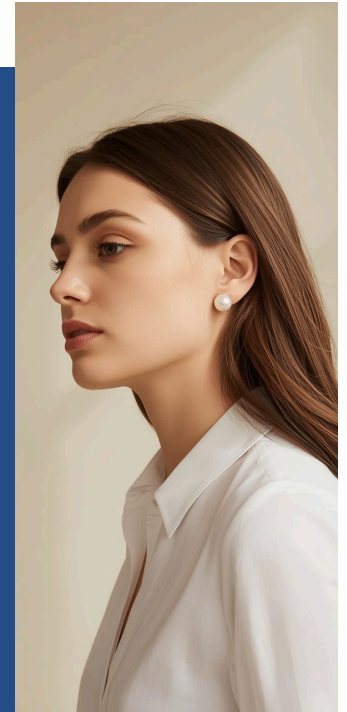
PIECES THAT CARRY MEANING ACROSS GENERATIONS.



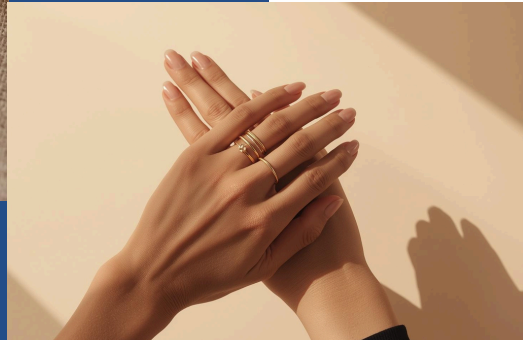
# SMART CHOICES

## EVERYDAY VALUE

PRACTICAL ELEGANCE THAT WORKS AS HARD AS YOUR CUSTOMERS DO—VERSATILE PIECES FOR DAILY WEAR.



VALUE-DRIVEN JEWELRY FOR PRACTICAL BUYERS. VERSATILE DESIGNS THAT TRANSITION SEAMLESSLY FROM OFFICE TO EVENING, MAXIMIZING COST-PER-WEAR FOR YOUR CUSTOMERS.



DURABLE CONSTRUCTION MEETS TIMELESS DESIGN. OUR EVERYDAY COLLECTION OFFERS PRICE-CONSCIOUS OPTIONS WITHOUT COMPROMISING ON QUALITY—PERFECT FOR BUDGET GIFTING AND DAILY ESSENTIALS.

STACKABLE RINGS, SIMPLE PENDANTS, AND CLASSIC STUDS—ENTRY-LEVEL PIECES THAT BUILD CUSTOMER LOYALTY AND ENCOURAGE REPEAT PURCHASES.



## BUDGET FRIENDLY

INVESTMENT PIECES THAT RETAIN VALUE WHILE DELIVERING EVERYDAY SOPHISTICATION.





YASHVI

JEWELLERY

[WWW.YASHVIJEWELLERY.IN](http://WWW.YASHVIJEWELLERY.IN)